

BROADWAY  THE EMBASSY

SPONSORED BY SHAMBAUGH & SON, L.P.

# Clue

LIVE ON STAGE!



Welcome to 2025-26 **Broadway at the Embassy**. Thanks to Shambaugh & Son, L.P. for sponsoring this season once again. Working closely with our Broadway partner, Nederlander National Markets, we are bringing you seven shows! Based on popularity when it was here in 2022, *The Book of Mormon* is back for one night! *Mrs. Doubtfire*, *Kinky Boots*, *Clue*, *Beetlejuice*, *The Music Man* and *Spamalot* are all here for two nights this season. Each show offers something unique for all Broadway theatergoers.

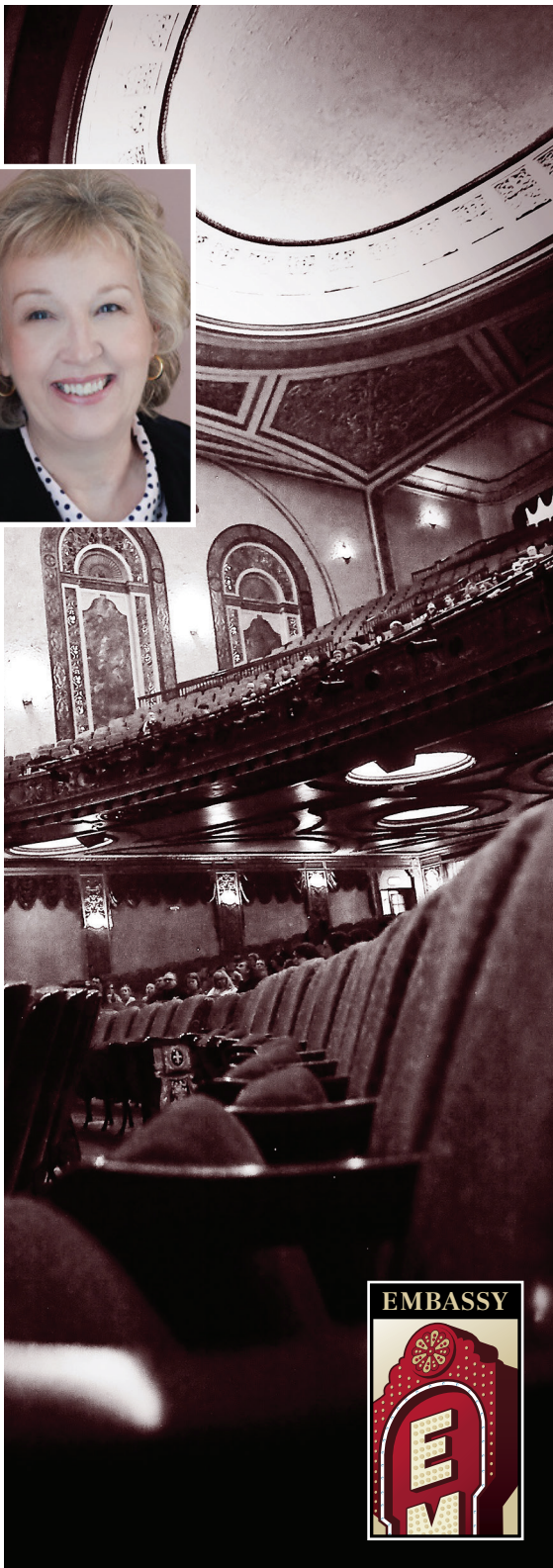


We adore and appreciate our season subscribers who commit to spending time immersing themselves in the stories of these incredible productions. Our subscribers help drive the growth of this series. We are offering the Balcony Club package for the second year. This limited package offers patrons a price-accessible option to see 3 shows with seats in the upper balcony plus three drink tickets for \$99. We also provide limited student rush tickets when available.

Have you attended Broadway Buzz? We offer this value-added experience for a few shows this season: *Clue*, *Beetlejuice* and *The Music Man*. Broadway Buzz is a pre-show feature for learning about these shows from experts in our community. The goal is to enlighten and amplify the love of live theater to better understand the stories behind these fabulous musicals and stage plays. This is a free experience to Broadway ticket holders. Watch your email for details and to RSVP.

Remember, sold-out performances and increased season subscriptions and packages will help us bring more Broadway to our community, including some of those requested hits! Thank you for your passion and support for **Broadway at the Embassy**.

**Kelly Updike**  
President & CEO



WORK LIGHT PRODUCTIONS and LME PRODUCTIONS  
PRESENT

# Clue

LIVE ON STAGE!

based on the screenplay by **JONATHAN LYNN**

written by **SANDY RUSTIN**

additional material by **HUNTER FOSTER** and **ERIC PRICE**

based on the Paramount Pictures Motion Picture  
based on the Hasbro board game CLUE

with

**SARAH MACKENZIE BARON ADAM BRETT CAMILLE CAPERS NATE CURLOTT JOSEPH DALFONSO TJ LAMANDO  
MADELINE RAUBE AT SANDERS ZOIE TANNOUS KEBRON WOODFIN KYLE YAMPIRO**

**THOMAS NETTER ALLISON MASULIS TAYLOR TVETEN LAYNE ROATE**

Scenic Design  
**LEE SAVAGE**

Costume Design  
**JEN CAPRIO**

Lighting Design  
**RYAN O'GARA**

Sound Design  
**JEFF HUMAN**

Hair, Wig & Makeup Design  
**J. JARED JANAS**

Composer and Music Supervision  
**MICHAEL HOLLAND**

Fight Direction  
**ROBERT WESTLEY**

Associate Director  
**SAKI KAWAMURA**

Casting  
**WHITLEY THEATRICAL  
PETER DUNN**

Production Stage Manager  
**JENNA WADLEIGH**

Company Manager  
**LAURENCE CHRISTOPHER**

Booking and Marketing Direction  
**BOND THEATRICAL**

Social Media  
**MARATHON DIGITAL**

Production Manager  
**PORT CITY TECHNICAL  
HUNTER STORIE**

General Manager  
**WORK LIGHT PRODUCTIONS  
MATT KUNKEL**

Directed by  
**CASEY HUSHION**

CLUE and all related characters are trademarks of Hasbro and are used with permission. ©2026 Hasbro. Licensed by Hasbro.

Originally produced at Bucks County Playhouse, New Hope, Pennsylvania, Alexander Fraser, Robyn Goodman,  
Stephen Kocis, Josh Fiedler, Producers.

Clue: A New Comedy developed by Cleveland Play House, Laura Kepley, Artistic Director & Kevin Moore, Managing Director

PRESENTED BY



*Sponsored By:*

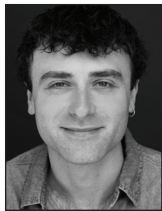
*Since 1926*



**SHAMBAUGH & SON, L.P.**  
CONTRACTORS • ENGINEERS • SERVICE



Sarah Mackenzie  
Baron



Adam  
Brett



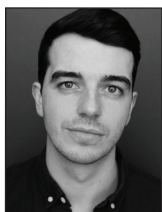
Camille  
Capers



Nate  
Curlott



Joseph  
Dalfonso



TJ  
Lamando



Madeline  
Raube



AT  
Sanders



Zoie  
Tannous



Kebron  
Woodfin



Kyle  
Yampiro



Thomas  
Netter



Allison  
Masulis



Taylor  
Tveten



Layne  
Roate

---

---

# CAST

*(in alphabetical order)*

Mrs. White .....	SARAH MACKENZIE BARON
Wadsworth .....	ADAM BRETT
Miss Scarlet.....	CAMILLE CAPERS
Colonel Mustard .....	NATE CURLOTT
Mr. Boddy (and others) .....	JOSEPH DALFONSO
Mr. Green.....	TJ LAMANDO
Mrs. Peacock.....	MADELINE RAUBE
The Cook (and others) .....	AT SANDERS
Yvette.....	ZOIE TANNOUS
The Cop (and others) .....	KEBRON WOODFIN
Professor Plum.....	KYLE YAMPIRO

## UNDERSTUDIES

Understudies never substitute for listed performers unless  
a specific announcement is made at the time of the appearance.

For Colonel Mustard—JOSEPH DALFONSO, KEBRON WOODFIN; For Wadsworth, Mr. Green, Professor Plum, Mr. Boddy (and others), The Cop (and others)—THOMAS NETTER, LAYNE ROATE; For Mrs. Peacock, Mrs. White, Yvette, Miss Scarlet, The Cook (and others)—ALLISON MASULIS, TAYLOR TVETEN.

## DANCE & FIGHT CAPTAIN

TAYLOR TVETEN

## TIME

1954

## PLACE

Boddy Manor, a mansion of epic proportions and terrifying secrets,  
in New England.



The use of any recording device, either audio or video, and the taking of photographs, either with or without flash, is strictly prohibited. Please turn off all electronic devices such as cellular phones, beepers, and watches.

---

---

# WHO'S WHO IN THE CAST

**SARAH MACKENZIE BARON** she/her (*Mrs. White*). Following in the steps of her idol Madeline Kahn, Sarah is beyond honored to be a part of *Clue!* Credits: Alice Beineke (*The Addams Family* National Tour), Ethel (*Footloose*), Witch (*Into The Woods*), originating Michael Scott in *The Office!: A Musical Parody* Off-Broadway. Love to Ben, Coraline, Mom & Dad, ATB, and the entire cast & crew! @saronbaroness

**ADAM BRETT** (*Wadsworth*). National Tour debut! Recent stage credits: *Anything Goes* (Timberlake Playhouse), *The Music Man* (Argyle Theater), *Cabaret* (Stage of Life). His own adaptation of *Treasure Island* premiered off-Broadway at The Center at West Park (Dartboard). BFA: Carnegie Mellon. Thank you to Casey, Penny, Jordan, JC, and Micah and Benton! Love to Mom & Dad! IG: adam\_brett\_

**CAMILLE CAPERS** (*Miss Scarlet*) is thrilled to be making her National Tour debut with *Clue!* She would not be here without the love of her family. Select Regional: Elizabeth (*Richard III*), Belle u/s (*Beauty and the Beast*), Celie (*The Color Purple*), Esmeralda u/s (*The Hunchback of Notre Dame*). Commercial: Chromebook, McDonald's, Nielsen Auto. NYC: NYC Play Fest., The Triad, 54 Below.

**NATE CURLOTT** he/him (*Colonel Mustard*) is so very excited to be performing for you today! Regional Credits include *The Music Of Denali* (Denali, AK); *The Bull, The Moon, and The Coronet of Stars* (Bloomington Playwrights Project); and *Louisville Championship Arm Wrestling* (Louisville, KY). Big love to his family, friends, and fiancé for the encouragement!

**JOSEPH DALFONSO** he/him (*Mr. Boddy and others, u/s Colonel Mustard*) is thrilled to be making his National Tour debut! Regional Credits: *The Glass Menagerie* (Sierra Repertory Theatre, New Stage Theatre), *The Play That Goes Wrong* (SRT). Off-Broadway: *The Fre* (The Flea). Film: *In Transit*. BFA Stonehill College. Endless gratitude to his family for their love and support. For Bruce. @josephdalfonso19

**TJ LAMANDO** (*Mr. Green*). Tours: *An American in Paris* (Adam), *South Pacific* (Professor), *In The Mood* (Man 2). Regional credits include: *Avenue Q* (Princeton/Rod), *The Producers* (Leo Bloom), *Dracula* (Quincy), *Merrily We Roll Along* (Charley

Kringas), *Peter and the Starcatcher* (Prentiss). Big thanks to Whitley Theatrical, Work Light, Casey, and my friends and family.

**MADELINE RAUBE** she/her (*Mrs. Peacock*). B.M. Oberlin Conservatory, M.M. NYU. Tours: Countess Lily (*Anastasia*, 500 shows). Regional: Kate (*Kiss Me, Kate*), Lily (*Secret Garden*), Charlotte (*Little Night Music*), Christine (*Phantom of the Opera*), Lilly (*Annie*), Lulu (*Footloose*, Engeman), Tuacahn '24 season. Recording: "Heathers Deluxe". Love & thanks to Mom, Dad, and my sisters. ATB Talent. IG: @mdrsinger

**AT SANDERS** she/her (*The Cook and others*) is a 22 year-old born and raised in Columbus, OH. AT graduated from Kent State University in 2025 with a BFA in Musical Theatre. She has worked with other theatres in the NE Ohio area and is excited to be making her touring debut with *Clue*. @abigail.sanders

**ZOIE TANNOUS** (*Yvette*) is thrilled to join her first National Tour! She dedicates every performance to Mom, Dad, and brother Zac, who sparked her love of comedy (flames... flames on the side of her face!). Credits: *Nickel Mines, Heathers, Hands on a Hardbody*. BFA: UC Irvine. Thanks to PMA, casting, creative team, mentors, friends, family. Now... who took the candlestick? IG: @zoietannous

**KEBRON WOODFIN** (*The Cop and others, u/s Colonel Mustard*) is a multit talented American actor and vocalist born and raised in the richly cultured city of New Orleans, Louisiana. He is also a self-taught pianist and composer. Notable credits include Film & TV: "NCIS: New Orleans", "The Stand", and *Keanu*. Theatre: *Jelly's Last Jam, Once On This Island*, and Tennessee Williams' *Not About Nightingales*. @datboikeeb

**KYLE YAMPIRO** he/him (*Professor Plum*). National Tour debut! Recent credits include Wilbur Turnblad in Royal Caribbean's *Hairspray*, The Baker in *Into the Woods*, and The REV. Voice teacher, a cappella clinician, and choral singer with credits including New York Philharmonic, New York Pops, Andrea Bocelli at MSG, and Josh Groban. DMA: James Madison, BM: Delaware. @kyleyampiro

**THOMAS NETTER** he/him (*u/s Wadsworth, Mr. Green, Professor Plum, Mr. Boddy and others, The Cop and others*). Off B'way: *Holy Rollers*. Nat'l Tour: *A Charlie Brown Christmas*. Other favorite credits include:

---

# WHO'S WHO IN THE CAST

*Fiddler on the Roof* (Motel), *Bye Bye Birdie* (Albert), *A Gentleman's Guide...* (D'Ysquith Family), *Matilda* (Trunchbull). Love to all "my people." Spoiler Alert! - "It was Thomas, on the tour, with immense gratitude." More at [notingbutnetter.com](http://notingbutnetter.com)

**ALLISON MASULIS** she/her (*u/s Mrs. Peacock, Mrs. White, Yvette, Miss Scarlet, The Cook and others*) is on the road for the first time in the *Clue* National Tour. Her recent credits include *Beautiful! The Carole King Musical*, *Working* and *Men on Boats*. She's been studying at The Second City and Upright Citizens Brigade. She thanks the Neighborhood Playhouse. To her parents, thank you! Their love and support have been no mystery!

**TAYLOR TVETEN** she/her (*Dance and Fight Captain; u/s Mrs. Peacock, Mrs. White, Yvette, Miss Scarlet, The Cook and others*). Int'l Tour: *Sound of Music* (Elsa Schraeder). Regional: *Once Upon A Mattress* (Winnifred, OAT); *Sound of Music* (MUNY, The Lex); *Heartbreak Hotel* (Priscilla Presley, Lyceum); *Dr. Jekyll & Mr. Hyde* (Elizabeth, Jobsite); *Into the Woods* (Cinderella); *Hair* (Jeanie); *Jersey Boys* (Francine, Sierra Rep); *Sweeney Todd, Clue* (Utah Shakes); *Pride & Prejudice* (Rep STL). @TaylorTvetenOfficial TaylorTveten.com

**LAYNE ROATE** (u/s *Wadsworth, Mr. Green, Professor Plum, Mr. Boddy and others, The Cop and others*). National Tour: *School of Rock*. Regional: *RENT* (Weathervane Playhouse), *Annie* (Kauffman Center), *American Idiot* (Victoria Theatre), *Titanic* (Music Theater Heritage), *School of Rock* (Starlight), *Freaky Friday* (New Theatre), *Baskerville* (Great American Melodrama). Much gratitude to God, Whitley Theatrical, and the *Clue* Team. Love to family and wife, Morgan.

**JONATHAN LYNN** (*Based On The Screenplay*). Films directed: *Clue, Nuns on the Run* (wrote both), *My Cousin Vinny, Greedy, Trial And Error, The Whole Nine Yards, The Fighting Temptations*. TV writing includes "Yes Minister" and "Yes, Prime Minister". Bestselling books: *The Complete Yes, Minister* and *The Complete Yes, Prime Minister*, translated into numerous languages. He wrote the novels *Mayday* (1991) and *Samaritans* (2017) and a memoir about comedy, *Comedy Rules* (2011). London: wrote/directed two plays: *Yes Prime Minister* and *The Patriotic Traitor*. His new play *I'm Sorry Prime Minister* opens in London's West End in February 2026. Awards: BAFTA, Writers Guild (twice),

Broadcasting Press Guild (twice), NAACP Image Award, Environmental Media Award, Ace Award, and a Special Award from the UK Campaign For Freedom of Information. Lynn received an MA in Law from Cambridge University and lives near New York City, writing new plays, describing himself as a recovering lawyer. [jonathanlynn.com](http://jonathanlynn.com)

**SANDY RUSTIN** (*Playwright*) is one of the "most produced playwrights" in America (*American Theatre Magazine*). She made her Broadway debut with her comedy, *The Cottage*. Her newest play, *The Suffragette's Murder* is a winner of the Edgerton Foundation New Play Award and Denver Center Theatre Company's Women's Voices Fund. Her musical adaptation of the film *Mystic Pizza* was most recently seen at The Paper Mill Playhouse (cast album available everywhere) and her new original musical *Always Something There* premiered in Chicago last summer. Sandy's adaptation of *Dear World* for NY City Center was a NY Times Critic's Pick and her play with music, *Houston*, is in development with Grammy winner, Edie Brickell. She has written for Disney, STX Entertainment, Primary Wave Music, and Mattel. Other works: *Loch Ness, Rated P ... For Parenthood, Elijah, Struck*, and more. A Northwestern University graduate, Sandy serves on the board of *Project Write Now* and the advisory board of *The Bridge*. Love to Evan, Isaac & Charlie. [www.sandyrustin.com](http://www.sandyrustin.com)

**HUNTER FOSTER** (*Additional Materials*). Originally adapted, developed and co-wrote *Clue*, and directed its world premier at the Bucks County Playhouse. He has directed *Clue* for the Utah Shakespeare Festival and the Cape Playhouse. He directed the off-Broadway musical *The Other Josh Cohen* and was named Director of the Year by the Wall Street Journal. Most recently he directed the new musical and world premier of *When Elvis Met the Beatles* at the Ogunquit Playhouse. Other recent credits include: *Driving Miss Daisy* (Aspen); *A Little Night Music* with Kathleen Turner, *Little Shop Of Horrors* (Ogunquit); *A Christmas Story* (Goodspeed); *The Play That Goes Wrong* (Clarence Brown), *South Pacific* (Engemen); *Noises Off, Company, The Bridges Of Madison County, Guys & Dolls* (Bucks County), *The Drowsy Chaperone, A Connecticut Christmas Carol* (Goodspeed), *Cabaret, My Fair Lady, Once, The Foreigner* (Cape Playhouse), *Jersey Boys, Our Town* (Aspen).

---

# WHO'S WHO IN THE CAST

**ERIC PRICE** (*Additional Materials*). Lyrics and Book: *The Violet Hour*, *Radioactive*, *Presto Change-o*, *Around the World*, *Hello Out There*, *The Sixth Borough*, and a musical adaptation of Jane Austen's *Emma*. The Studio Recording of *The Violet Hour* with a cast of Broadway stars was named The Best Cast Recording of 2022 by the Broadway Radio Show and inspired a documentary film *Moment to Moment* which tells the story of its creation. With collaborator Will Reynolds, Eric won the Fred Ebb Award for Musical Theatre Writing. He's a member of the Lincoln Center Theatre Directors Lab, a Dramatists Guild Fellow, and earned an MFA in Musical Theatre from NYU. In addition to his career as a writer, Eric was the assistant to 21-time Tony Award®-winner Hal Prince and worked with him for many years on the development of new plays and musicals. [www.theviolethourmusical.com](http://www.theviolethourmusical.com)

**CASEY HUSHION** (*Director*). Broadway: Associate Director of *Mean Girls*, *Aladdin*, *The Prom*, *In The Heights*, *Elf*, *The Drowsy Chaperone*, *To Be Or Not to Be* and *Good Vibrations*. New York credits include *Call Me Madam* (Encores), *Fat Camp* and *Nerds* (almost). Before launching the national tour of *Clue*, Casey directed the premiere at Cleveland Playhouse, as well as productions at la Mirada Theatre and Paper Mill Playhouse. Also at Paper Mill, she has directed *Murder On The Orient Express*, *A Jolly Holiday*, *Beehive* and *Beautiful*. Most recently, Casey helmed the National Tour of *The Cher Show* and the new musical *Mystic Pizza*. Casey served as Artistic Director of North Carolina Theatre for ten years. For television, Casey has choreographed episodes of "Unbreakable Kimmy Schmidt." Love to Marc and her three kids, Lincoln, Violet and Jane. [www.caseyhushion.com](http://www.caseyhushion.com)

**LEE SAVAGE** (*Set Design*). Broadway: *The Lighting Thief*. NYC: Women's Project, Second Stage Uptown, Keen Company, Acting Company, Mabou Mines, Labyrinth, Primary Stages, LCT3, Roundabout Underground, Page 73, Atlantic, NAATCO, and others. REGIONAL: ACT, Asolo Rep, Baltimore Centerstage, Chautauqua, Cleveland Play House, Dallas Theater Center, Glimmerglass, Goodman, and others. AWARDS: Helen Hayes, NAACP and Connecticut Critics Circle. Affiliations: Wingspace and USA829. MFA (Yale School of Drama), BFA (RISD),

Head of Scenic Design at Rutgers, Mason Gross School of the Arts.

**JEN CAPRIO** (*Costume Design*). Broadway: *Heart of Rock and Roll*, *Spamalot*, *Falsettos*, *The 25th Annual Putnam County Spelling Bee*. National/International: *Falsettos*, *Joseph...*, *The Lion* (West End/US Tour), *...Spelling Bee* (US Tours). TV: "The Pigeon Explains" (YouTube), "Tiny Time Travel" (PBS Kids), "Sesame Street" (seasons 47-54), "The Not-Too-Late Show with Elmo" (Seasons 1-2), "Manhunt" (Apple TV+). Four Emmy nominations, 2020 Daytime Emmy Winner for "Sesame Street". [@jencapriocostumedesign](http://www.jencaprio.com)

**RYAN O'GARA** (*Lighting Design*). Broadway: *The Wiz*, *Thoughts of a Colored Man*. National Tour (select): *The Wiz*, *Mystic Pizza*, *On Your Feet*, *MDQ - Christmas*, *Juke Box Hero*, *Blippi*, *Vocalosity*, *The Little Prince* and *A Night with Janis Joplin*. Select: Cirque, Norwegian Cruise Line, Tokyo DisneySea, NY City Opera, Paper Mill, Walnut Street, Drury Lane, TUTS, New Victory Theatre, Capital Repertory and Bristol Riverside Theatre (2016 Barrymore). ALD for 29 Broadway productions. Graduated from UNCSA. [www.ryanogara.com](http://www.ryanogara.com)

**JEFF HUMAN** (*Sound Design*) is the Director of Design for Kirkegaard Integrated Systems Design. He was the Associate Sound Designer for *Something Rotten* Second National Tour and Seoul productions. His regional sound design credits include *Clue* at the Cleveland Play House and *The Aliens* and *Bad Dates* at the Weston Playhouse. Gratitude to Steve and Nancy Gabriel and Rhys Williams. Many thanks to Rossella and the kids for their love and support. [www.kirkegaard.com](http://www.kirkegaard.com)

**J. JARED JANAS** (*Hair, Wig, & Make Up Design*). Select Broadway: *Dead Outlaw*; *John Proctor Is the Villain*; *Buena Vista Social Club*; *Prayer for the French Republic*; *Purlie Victorious*; *Good Night, Oscar*; *Sweeney Todd...*; *Ohio State Murders*; & *Juliet*; *Kimberly Akimbo*; *Frankie and Johnny...*; *Gettin' the Band Back Together*; *Indecent*; *Sunset Boulevard*; *The Visit*; *The Real Thing*; *Lady Day at Emerson's Bar & Grill*; *Motown*; *Peter and the Starcatcher*; *The Gershwins' Porgy and Bess*. Recent Off-Broadway: *Masquerade*.

---

# WHO'S WHO IN THE CAST

**MICHAEL HOLLAND** (*Original Music and Music Supervision*). Orchestrations/vocal arrangements: *Godspell* (Broadway revival); *You're a Good Man, Charlie Brown* (Cincinnati Playhouse); *Emma: A Pop Musical* (Broadway Licensing); Farah Alvin: *On Vinyl* (2023 recording). Music and lyrics: *Twelve Angry Men: A New Musical* (2021 World Premiere, Theater Latté Da, Minneapolis; Asolo Rep, Sarasota, Spring 2024). Incidental music: Dallas Theater Center, Alley, Old Globe, Playwrights Horizons, Bay Street, others. Upcoming: *She's Come Undone* (music and lyrics), Theater Latté Da, 2026/27.

**ROBERT WESTLEY** (*Fight Director*) has choreographed movement for Broadway, Off-Broadway, West End Productions and award-winning films developing unique and exciting performances of dance, clowning, aerial acrobatics, puppetry and martial art. Broadway: *I Need That*, *Bernhardt/Hamlet*, *A Bronx Tale: The Musical*, *Hand to God*. Off-Broadway: *Teenage Dick* (Public Theater), *Important Hats of the Twentieth Century* (MTC), *The Thanksgiving Play* (Playwrights Horizons). West End: *Mad House*. Pre-Broadway Musicals: *The Sting*, *The Honeymooners*.

**SAKI KAWAMURA** (*Associate Director*) is thrilled to be back at Boddy Manor for the third time! Associate/Assistant: *Pirates! The Penzance Musical* (Broadway), *The Counter* (Off-Broadway), *The Cher Show* (National Tour), *Mystic Pizza* (Paper Mill Playhouse/Riverside Theatre/Ogunquit Playhouse), and many more with Casey Hushion. She was named as the Directing Fellow at Roundabout Theatre Company last year. MFA Directing at Pace University. [www.sakikawamura.com](http://www.sakikawamura.com)

**WHITLEY THEATRICAL** (*Casting*). Benton Whitley CSA & Peter Dunn. Current Broadway/NY: *Hadestown* (Artios Award) & *Moulin Rouge!* (star casting). Previous B'way/NY: *Life & Trust*, *Three Houses*, *How to Dance in Ohio*, *Life of Pi*, *Chicago*, *Paradise Square*, *Rock of Ages*, *Lightning Thief*, *Great Comet of 1812*, *Elf*, *On the Town*, *Pippin*, *La Cage*, *Radio City Christmas Spectacular*. Tours: *Hadestown*, *Ain't Too Proud*, *Hairspray*, *Waitress*, *Charlie and the Chocolate Factory*, *Finding Neverland*. Regional: countless. Follow: @whitleytheatrical & whitleytheatrical.com

**BOND THEATRICAL** (*Tour Booking, Marketing & Publicity*) is an independent-owned theatrical booking, marketing and

publicity company representing award-winning Broadway shows and live entertainment properties. BOND connects artists and audiences by forming strategic, authentic and profitable partnerships between producers and presenters across North America. For a complete list of current projects, please visit [BondTheatrical.com](http://BondTheatrical.com).

**PORT CITY TECHNICAL** (*Production Management*) is a production management company based in Charleston, S.C. Also referred to as "Work Light South," PCT was initially started in 1993 as Technical Theater Solutions by Rhys Williams. TTS worked with WLP on many shows, including *American Idiot*, *Nice Work If You Can Get It*, *In the Heights* and *Avenue Q*. Since the conception of PCT, tours with WLP have included *Rent*, *An Officer And A Gentleman*, *Vocalosity*, *Motown*, *R&H's Cinderella*, *Something Rotten!*, *Bandstand*, *White Christmas*, *Jesus Christ Superstar*. Company and the pre-Broadway and national tours of *Ain't Too Proud: The Temptations Musical*. Current productions include *Clue*, *MAMMA MIA! Broadway*, *Mrs. Doubtfire*, and *Stereophonic*.

**JENNA WADLEIGH** (*Production Stage Manager*) is from Conifer, Colorado. Jenna is thrilled to join the hunt for whodunnit with this amazing team! National tours: *Ain't Too Proud*, *Fiddler on the Roof*, *An American in Paris*, *South Pacific*. Regional/Dance: UofU School of Dance, American Dance Festival, Bates Dance Festival. Love always C, J, A, K, & Addie. [www.jennawadleigh.com](http://www.jennawadleigh.com)

**HARRISON SOLENDAY** (*Assistant Stage Manager*) is thrilled to be joining *Clue* on tour. Originally from Pittsburgh, PA. His past credits include Tour: *Ain't Too Proud*, *Cirque Dreams*; Regional (Pittsburgh CLO): *Mamma Mia!*, *Titanic*, *Brigadoon*, *Beauty and The Beast*. He wishes to thank his family and friends for their endless love and support!

**LAURENCE CHRISTOPHER** (*Company Manager*). National Tour: *Pretty Guardian Sailor Moon*. Regional: Williamstown Theatre Festival. (Production Operations Manager/ Assistant Production Manager) Broadway: *Mamma Mia!* National Tours: *Ain't Too Proud*, *Clue*, *Mamma Mia!*, *Mrs. Doubtfire*, *Stereophonic*. Education: Temple University. For my family, friends, teachers, & former students. To every educator across the country — YOU make a difference!

---

# WHO'S WHO IN THE CAST

**WORK LIGHT PRODUCTIONS** (*Producer & General Management*). Formed in 2005 for the purpose of developing new work for young audiences, WLP is a full service producing, investment, general management, and technical supervision company with offices in Summit, NJ and Charleston, SC. WLP regularly employs over 200 actors, musicians, managers, and technical crews on productions throughout North America and internationally. Current and past productions include: the Olivier Award winning production of *Jesus Christ Superstar* (North America, UK Tour, Australia, Asia Tour), *Ain't Too Proud* (Broadway, North America, West End), *Clue* (North America), *Cluedo* (UK), *Mamma Mia!* (Broadway, 25<sup>th</sup> Anniversary Tour), *The Who's Tommy* (Broadway), and the North American tours of *Mrs. Doubtfire*, *Company*, *RENT 25<sup>th</sup> Anniversary Tour*, *An Officer and a Gentleman*, *Motown*, *Something Rotten!*, *Bandstand*, *R&H's Cinderella*, *White Christmas*, *American Idiot*, *In The Heights* and *Avenue Q*. Produced Julie Andrews, *The Gift of Music* at The Hollywood Bowl and London's O2 Arena. WLP is led by founding partners Stephen Gabriel and Nancy Gabriel. [worklightproductions.com](http://worklightproductions.com)

**LME PRODUCTIONS** (*Producer*) is a production affiliate of theatrical development and IP management company Lively McCabe Entertainment. The company is best known for its collection of theatrical properties including: *Clue* (based on the 1985 Paramount film and Hasbro game) and it's UK sibling *Cluedo*, the musical adaptation of *Mystic Pizza* (based on the MGM film starring Julia Roberts), and its Hits Musicals collection at MTI which includes country music musical *May We All*, 80s jukebox *Always Something There...*, holiday favorite *The Santa Switch*, and upcoming musical adaptations of the iconic films *Girls Just Want To Have Fun* and *Can't Hardly Wait*. For more info please visit [www.livelymccabe.com](http://www.livelymccabe.com).

**BUCKS COUNTY PLAYHOUSE** (*Originally Produced*) has re-emerged as a driving force in regional theatre for original productions of classic plays and musicals and developing new work since its multi-million-dollar restoration in 2012. The Wall Street Journal hailed the Playhouse as "one of the top regional theaters on the East Coast," citing four recent productions in its year's-end "best of" list. It has produced six world premieres, including

Candace Bushnell's *Is There Still Sex in the City*, *Rock and Roll Man* and *Other World*.

**CLEVELAND PLAY HOUSE** (*Developing House*). Founded in 1915 and recipient of the 2015 Regional Theatre Tony Award, Cleveland Play House is America's first professional regional theatre. Throughout its rich history, CPH has remained dedicated to its mission to inspire, stimulate and entertain diverse audiences in Northeast Ohio by producing plays and theatre education programs of the highest professional standards. CPH has produced more than 100 world and/or American premieres, and over its long history more than 12 million people have attended over 1,600 productions.

**PARAMOUNT PICTURES** (*Based on the Paramount Pictures Motion Picture*) a division of Paramount Global, has for more than 110 years produced and distributed some of the world's most iconic films. Paramount Global's Broadway and West End titles include *Mean Girls*, nominated for 12 Tony Awards and now on its second national tour; *The SpongeBob Musical*, nominated for 12 Tony Awards; *Sunset Boulevard*, returning to Broadway in 2024; *School of Rock*; *Ghost*; *Almost Famous*; *The Kite Runner*; and *Irving Berlin's White Christmas*. Stage projects in development include *Clueless the Musical*.

**HASBRO** (*Based on the Hasbro board game CLUE*) is a leading games, IP and toy company whose mission is to create joy and community through the magic of play. With over 164 years of expertise, Hasbro delivers groundbreaking play experiences and reaches over 500 million kids, families and fans around the world, through physical and digital games, video games, toys, licensed consumer products, location-based entertainment, film, TV and more. Through its franchise-first approach, Hasbro unlocks value from both new and legacy IP, including MAGIC: The Gathering, Dungeons & Dragons, Monopoly, Hasbro Games, Nerf, Transformers, Play-doh And Peppa Pig, as well as premier partner brands. Powered by its portfolio of thousands of iconic marks and a diversified network of partners and subsidiary studios, Hasbro brings fans together wherever they are, from tabletop to screen. © 2026 Hasbro, Inc. All Rights Reserved.

---

---

## STAFF FOR CLUE

---

### GENERAL MANAGEMENT

#### WORK LIGHT PRODUCTIONS

Stephen Gabriel Nancy Gabriel

Anièle Fortin-Perkell, Chief Operating Officer & Executive Producer

Matt Kunkel, VP of Creative Development & General Manager

Sanjida Chowdhury, Assistant General Manager

Jordyn David Mackenzie Foster

Kimberly Helms Courtney King Marian Osadebe  
Casi Pruitt Mitchell Skolnick

---

### PRODUCTION MANAGEMENT

#### PORT CITY TECHNICAL

Rhys Williams, Vice President of Production

Hunter Storie, Director of Production

Diamond Fulwood, Assistant Production Manager

Blake Berggren Ryan George

Rossella Human Tom Klonowski

---

### TOUR BOOKING, MARKETING & PUBLICITY

#### BOND THEATRICAL

bondtheatrical.com

Temah Higgins Mollie Mann DJ Martin

Marc Viscardi Wendy Roberts

Jenny Bates

#### BOOKING & OPERATIONS

Mary K. Witte Madison St. Amour Laura Rizzo

Jesse Daniels Kolten Bell Jordan Ivezaj

#### MARKETING & PUBLICITY

Steph Kelleher Elisabeth Reyes

Melissa Cohen Alexandra De La Cerda

Caroline Frawley Bridget Gross Tony Joy

Deborah Mann Harrison Mootoo Scotland Newton

Anne Simendinger Linda Stewart Katelyn Wenkoff

---

### CASTING

#### WHITLEY THEATRICAL

Benton Whitley, CSA Peter Dunn, CSA

---

### LEGAL COUNSEL

Lazarus & Harris LLP

Scott Lazarus, Esq. Robert C. Harris, Esq.

Emily Lawson, Esq. Carter Anne McGowan, Esq.

Diane Viale Patrick Wilcox

---

### MUSIC CLEARANCE AND SUPERVISION

Janet Billig Rich and Lisa Moberly for  
Loudspeaker Music Group

"Clue (Alternate 1)" (a/k/a "Clue Main Title") Written by  
John Morris Used by permission of Sony/ATV Harmony  
(ASCAP). All Rights Reserved.

"Shake, Rattle and Roll" Written by Charles E. Calhoun  
Used by permission of Mijac Music (BMI), courtesy of  
Sony/ATV Music Publishing, and Unichappell Music Inc.  
(BMI) All Rights Reserved.

"Sh-Boom (Life Could Be a Dream)" Written by James  
Keyes, Claude Feaster, Carl Feaster, Floyd McRae and  
James Edwards. Used by permission of Unichappell  
Music Inc. (BMI) All Rights Reserved.

Company Manager..... Laurence Christopher  
Assistant Company Manager..... Zaryah Forde  
Production Stage Manager..... Jenna Woldeigh  
Assistant Stage Manager..... Harrison Solenday  
Associate Costume Designer..... Brynne Oster-Bainnon  
Costume Assistant..... Emily Keebler  
Assistant Lighting Designer..... Michael Crevoisier  
Lighting Programmer..... Jonah Camiel, Taylor Jensen  
Associate Hair, Wig and Makeup Designer..... Lily Volle  
Production Carpenter..... Tom Klonowski  
Production Electrician..... Robert Virzera  
Sub Production Electrician..... Jeremy Granger  
Production Audio..... Jessica Glynn  
Production Wardrobe..... Rossella Human, Jaron Myers  
Head Carpenter..... Shane Lowry  
Assistant Carpenter/Flyman..... Lauryn Daley  
Assistant Carpenter..... Ryan McDaniel  
Head Electrician..... Lana Kathryn  
Assistant Electrician..... Chaz Broadbent  
Head Audio..... Ethan Ackland  
Head Props..... John Mark Zink  
Head Wardrobe..... Rheid Heska-McJannet  
Head Hair & Makeup..... Kayla Cannady-Truwell  
Swing Tech..... James Halliley  
Production Assistant..... Jules Garber  
Accounting..... Withum Smith + Brown, PC  
Controller..... Galbraith & Co./Jessica Pressman  
Social Media..... Marathon Digital/Mike Karns,  
Melanie Pateiro, Ava Coploff, Evan Kiel  
HR Consultant..... K+K Reset, Kiah Jones &  
Karen Robinson  
Banking..... FLAGSTAR/Margaret Monigan  
Insurance..... The Arts Insurance Program, LLC/  
Bob Middleton, Meghan Coleman, Toni Preto  
Travel/Housing..... Road Rebel  
Payroll Services..... Stratus  
Physical Therapy..... Neurosport NYC, LLC  
Production Photographer..... Evan Zimmerman for  
MurphyMade  
Video..... HMS Media  
Merchandise..... The Araca Group

---

### CREDITS AND ACKNOWLEDGEMENTS

Costumes built and provided by Siam Costumes,  
Christopher Schramm, Giliberto Designs, Arel Studio,  
Bethany Joy Costumes. Audio Equipment provided by  
PRG. Lighting and Rigging Equipment provided by Christie  
Lites. Workboxes provided by Port City Equipment Rental.  
Scenery built and painted by TTS Studios. Original Props  
from Cleveland Play House. New Prop builds & modifica-  
tions from BrenBri Props. Wigs built by Backstage Artistry.

---

Rehearsed at Pearl Studios



The Director and Choreographer are members of  
the **STAGE DIRECTORS AND CHOREOGRAPHERS  
SOCIETY**, a national theatrical labor union.



**United Scenic Artists • Local USA 829**  
of the I.A.T.S.E. represents  
**the Designers & Scenic Artists**  
for the American Theatre

---



Backstage Employees are represented by the  
International Alliance of Theatrical Stage  
Employees (or I.A.T.S.E.).

---

# NEDERLANDER NATIONAL MARKETS LLC

■ A NEDERLANDER PRESENTATION

James L. Nederlander  
*President*



NEDERLANDER

Nick Scandalios  
*Chief Operating Officer*

Jack Meyer  
*Vice President, Programming*

Suzanne Bizer  
*Sr. Vice President, NNM*

---

---

*Vice President of Nederlander National Markets*..... Michelle Bjelke  
*VP of Marketing*..... Brian Vogler  
*Sr. Director of Programming*..... John McCall  
*Senior Staff Accountant*..... Jill Hilty  
*Director of Operations*..... Deanna Gonzalez  
*Regional Marketing Directors*..... Ashley Gibson, Lauren Gutierrez,  
Micah McDade, Casey Torrance  
*Art Production Director*..... Steven Crissey  
*Operations Manager*..... Meredith Maiorana  
*Event Manager*..... Esme Burrows  
*Ticketing & Audience Manager*..... Hayden Lane-Davies  
*Programming Manager*..... Emily Lloyd  
*Staff Accountant*..... Lisa Matthews  
*On-site Management*..... Harold Hanson, Josh Weckesser, Mickey Mulcahy,  
Chris Holman, Nicholas Broussard, Diane Alianiello

---

---

The name “Nederlander” has been synonymous with great entertainment since 1912. A show business dynasty began when David T. Nederlander, a smart young businessman living in Detroit Michigan, purchased a 99-year lease on the Detroit Opera House. In 1964, his son James M. Nederlander came to New York City and purchased the Palace Theatre on Broadway. His hard work, pioneering spirit and vision enabled him to build one of the largest privately held live entertainment companies in the world, including theaters in 32 cities across the United States and theaters in London.

Nederlander National Markets, a Nederlander Presentation based in Chicago, is one of the largest presenters of Broadway series and engagements across North America. Currently, they oversee subscription seasons in more than 20 cities throughout the country.

Nederlander continues the tradition of operating historic theatres, producing and presenting the best in theatrical and concert events, and innovating new ways to engage future generations of theatergoers.

[www.nederlandernationalmarkets.com](http://www.nederlandernationalmarkets.com)

**Media Sponsor:**



# ON STAGE

with

## Eva Noblezada

Friday | April 24

**A Premium  
Broadway Experience**



- Cocktails & Gourmet Food Stations
- On-Stage Seating During Performance
- Meet & Greet with Eva Noblezada
- Dessert & Lobby Reception Afterward

*Your attendance helps preserve our historic stage.*

**Sit On Stage with Eva:**

Diamond Sponsors: Georgia Wralstad-Ulmschneider & Mark Ulmschneider

Encore Sponsors: Beth Goldsmith & Lincoln Financial

Educational Sponsors: Christina and Colin Gibb



BROADWAY★THE EMBASSY

*celebrating*

The Embassy and Shambaugh

through the years.



SHAMBAUGH.COM